



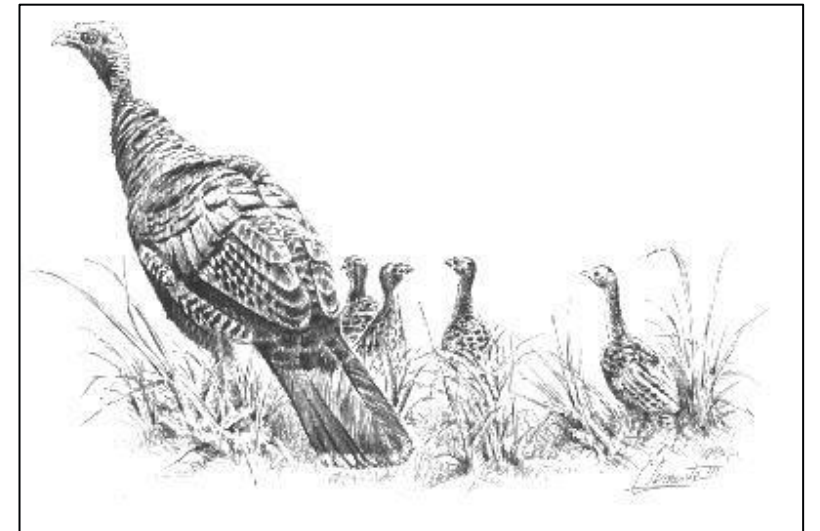
Tennessee Wild Turkey Management Program Status Report

TN-NWTF State Board Meeting
January 17, 2026

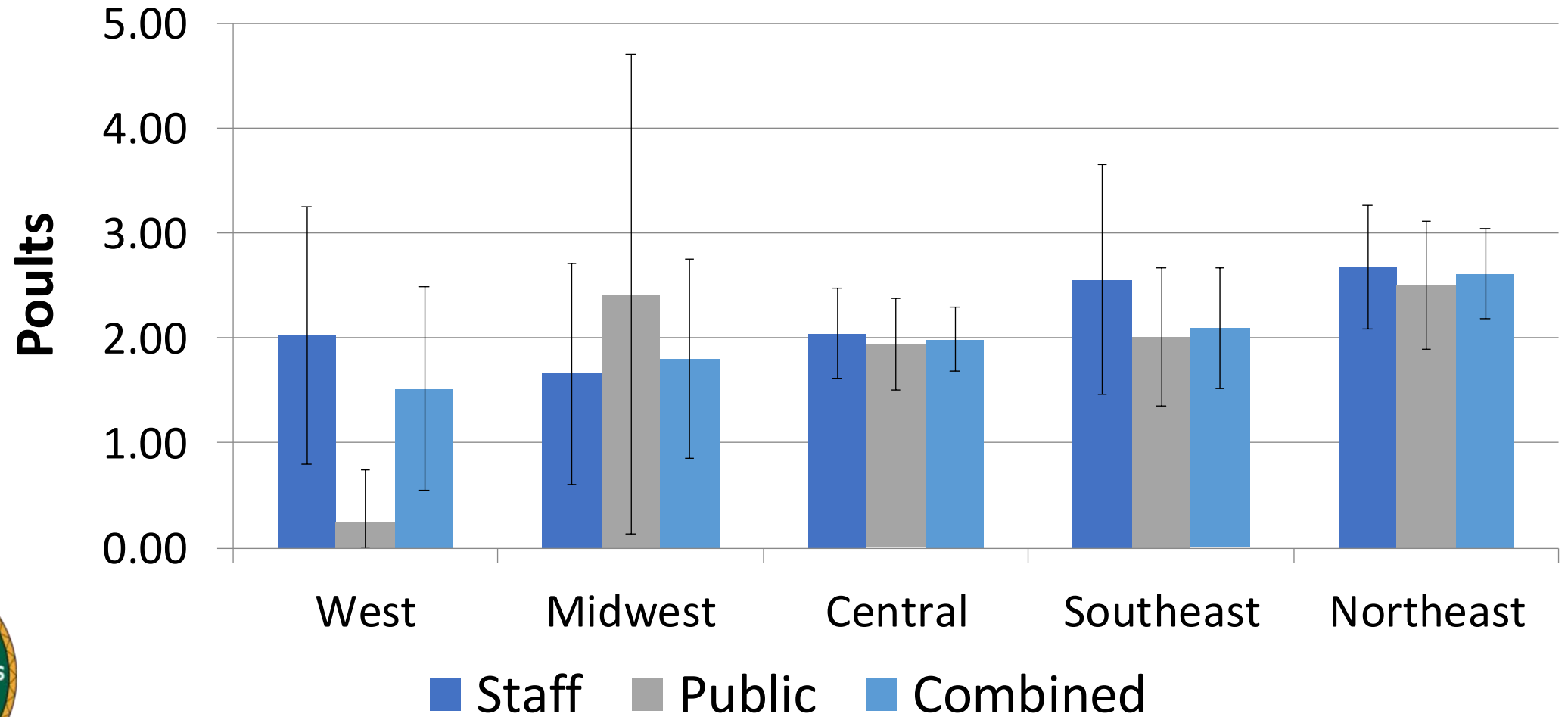
Roger Shields
Wild Turkey Program Coordinator
Wildlife and Forestry Division

2025 Summer Wild Turkey Survey

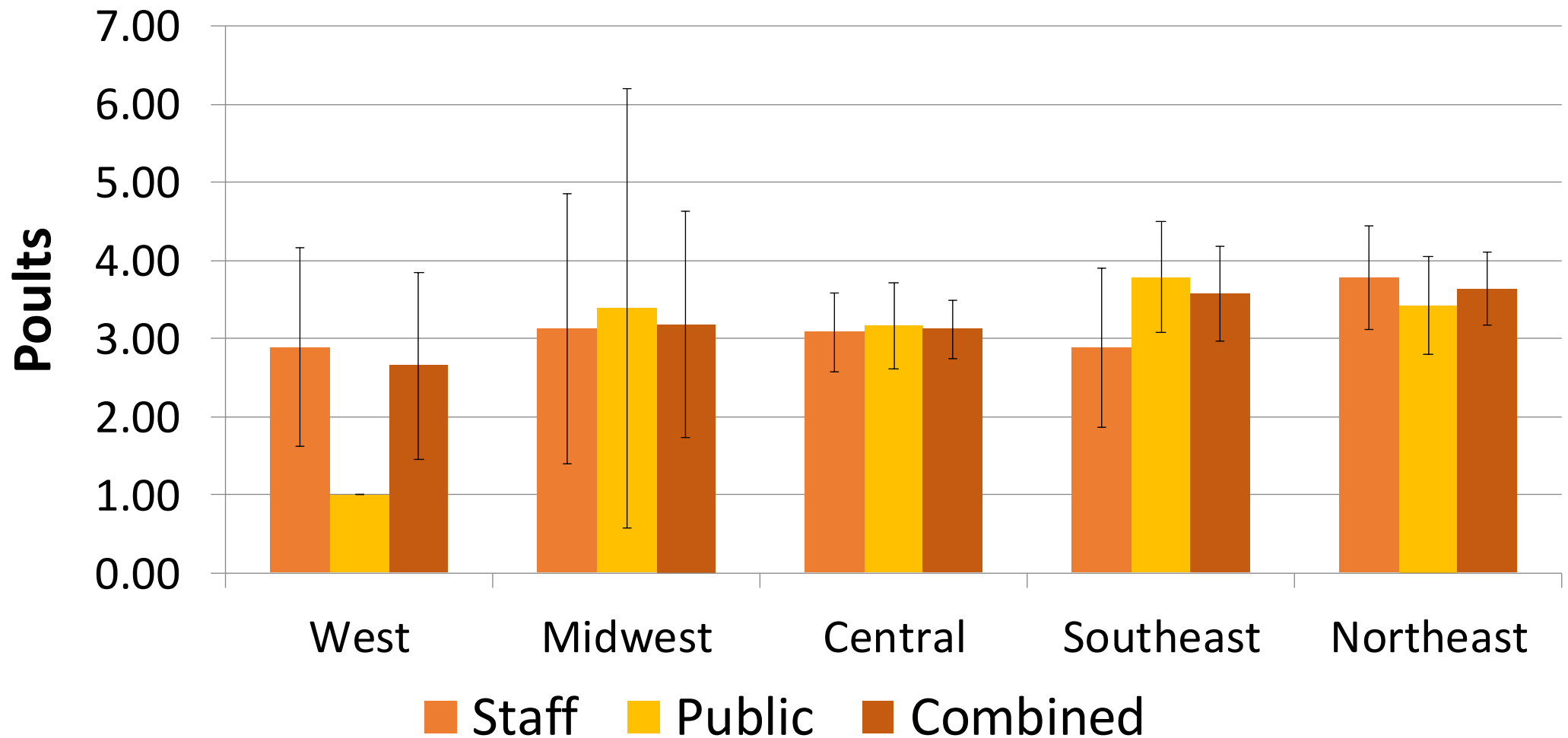
- Public participation down much from last year
 - ~460 unique public observers (vs 742 - 2,786 in '22-'24)
 - 1,002 observations (vs 1,333 - 4,217 in '22-'24)
 - From 88 counties
- Staff
 - 92 unique observers (152 in '24)
 - 942 observations
 - From 84 counties
- Estimates ~similar where high obs



Regional PPH Ratio, 2025



Regional PPB Ratio, 2025



2025 Statewide Wild Turkey Productivity

- Overall a below-average year
 - 2.2 PPH*
 - 3.3 poult per brood*
 - 60% of hens with broods
- Increasing West to East
- NE unit a fairly strong year
 - 17-yr Cicada hatch (brood XIV)??



*Based on new calculation method

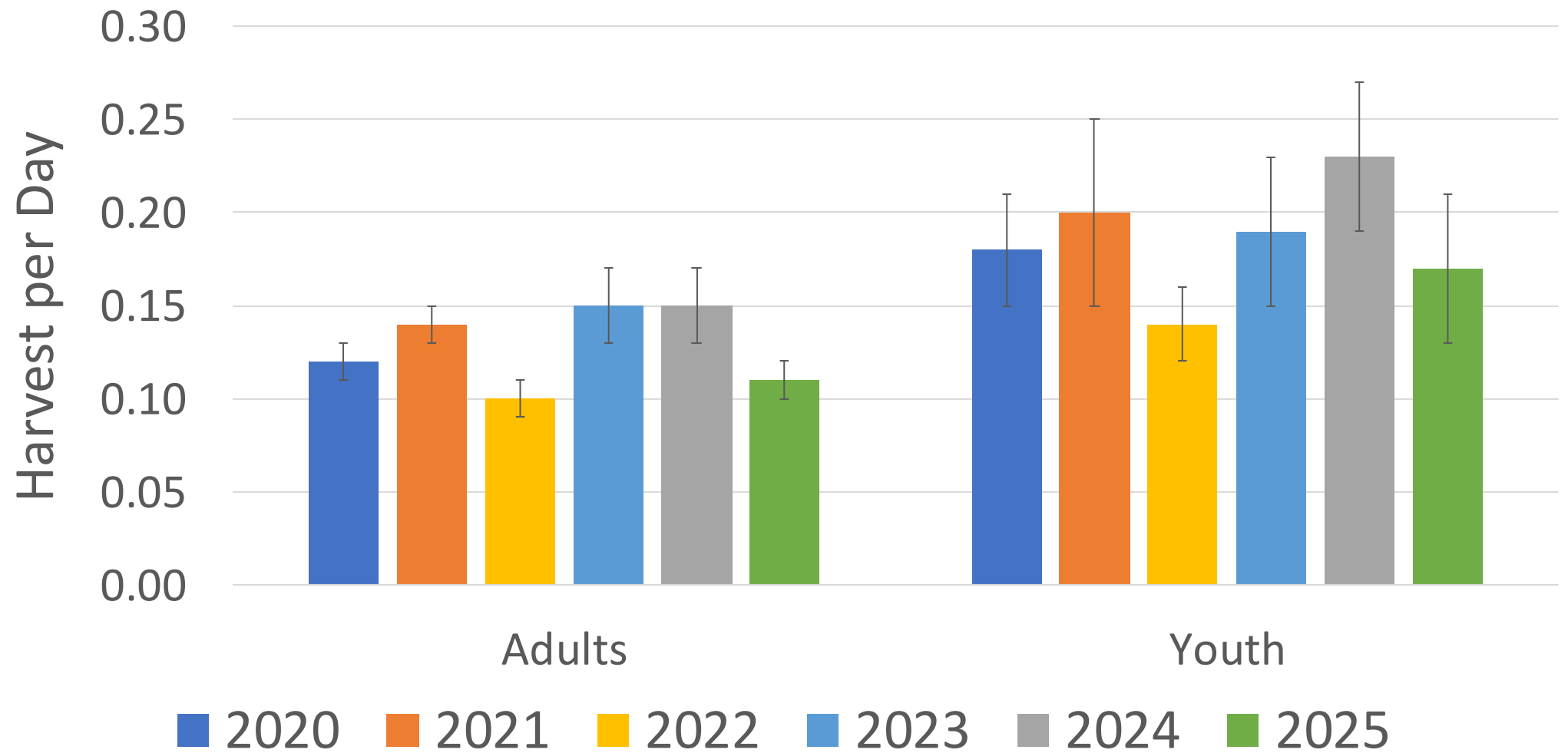


Post-season Hunter Harvest Survey, 2025

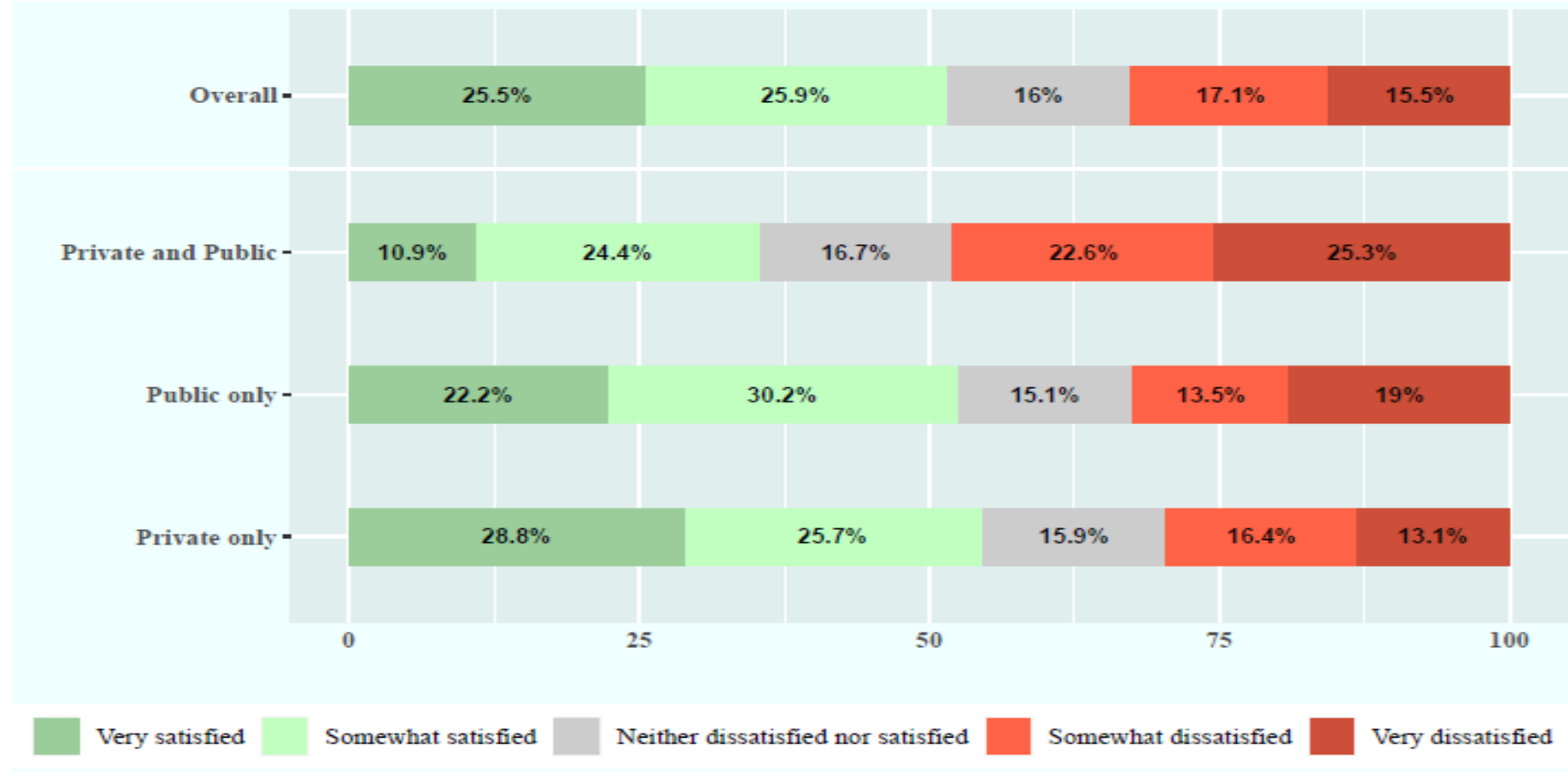
- ***Preliminary results***
- 4,442 responses
- Overall, 45% of adults and 41% of youth harvested ≥ 1 turkey
- Average days afield up slightly from last year
 - Days afield averaged 7.8 (adults) and 3.8 (youth)
- Harvest rate down from past couple years
 - 0.11 birds/day for adult hunters; 0.17 for youth



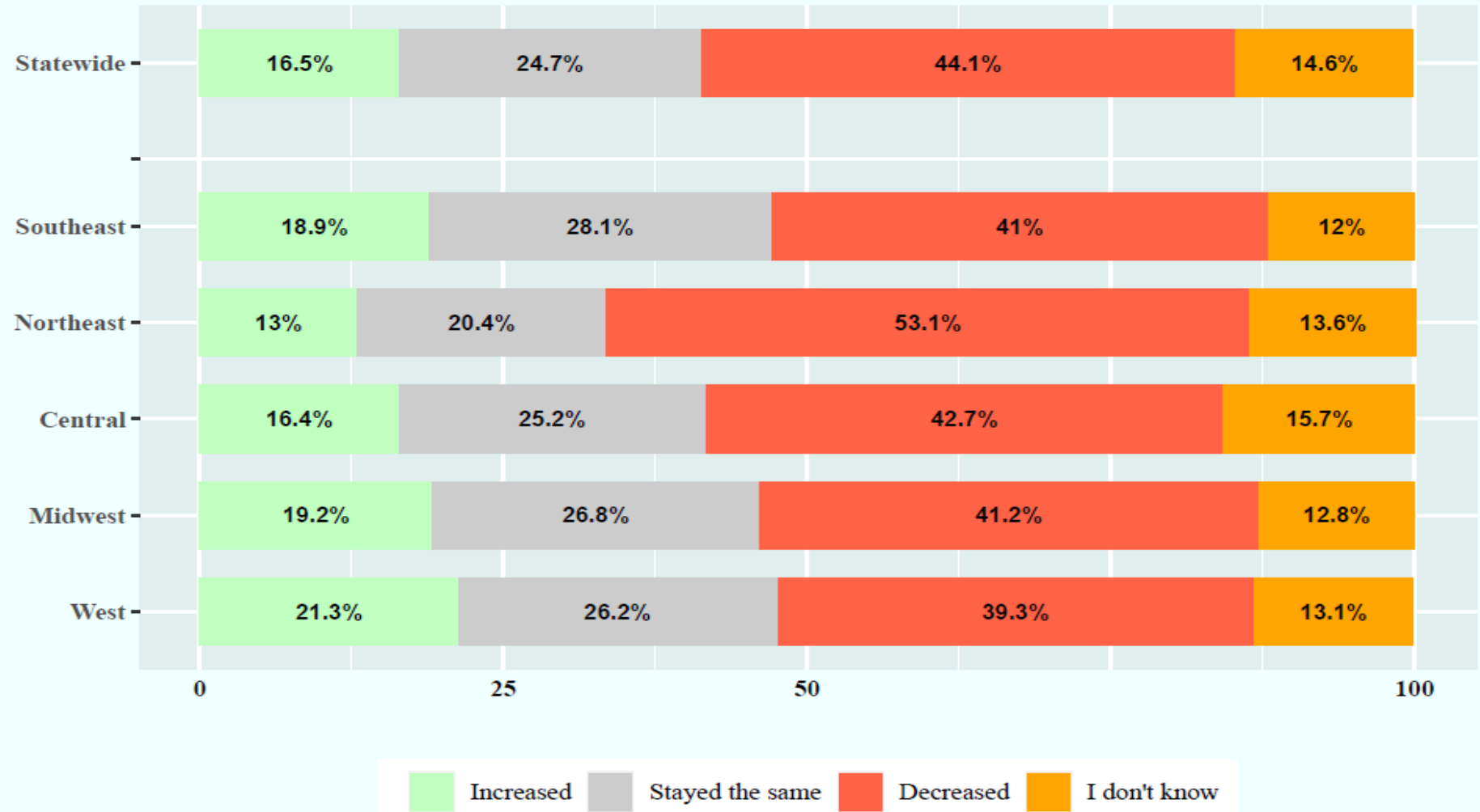
Harvest Rate, 2020-2025



Satisfaction with 2025 Hunting Experience



Perceived Change in Population



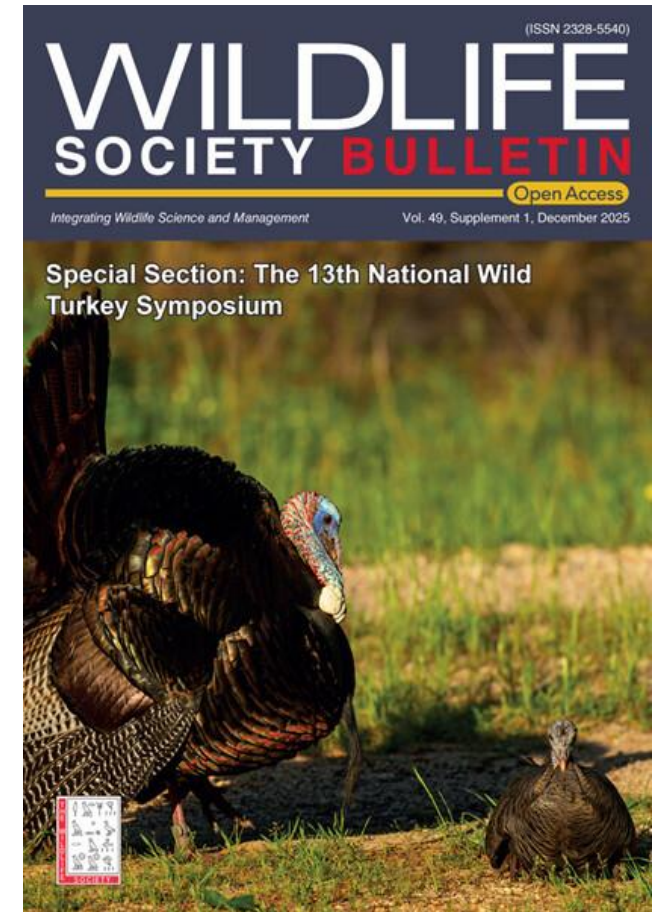
Hatchie River WMA

- Commission approved designation and hunting seasons
- 7,400+ acres in Haywood, Hardeman, and Madison counties
- The only remaining unchanneled river in West Tennessee
- Statewide hunting and trapping regulations; exceptions include:
 - only temporary blinds allowed for waterfowl season
 - specific regulations for spring turkey hunting, consistent with other Region 1 WMAs (e.g., 4-week season; 1 bird limit)

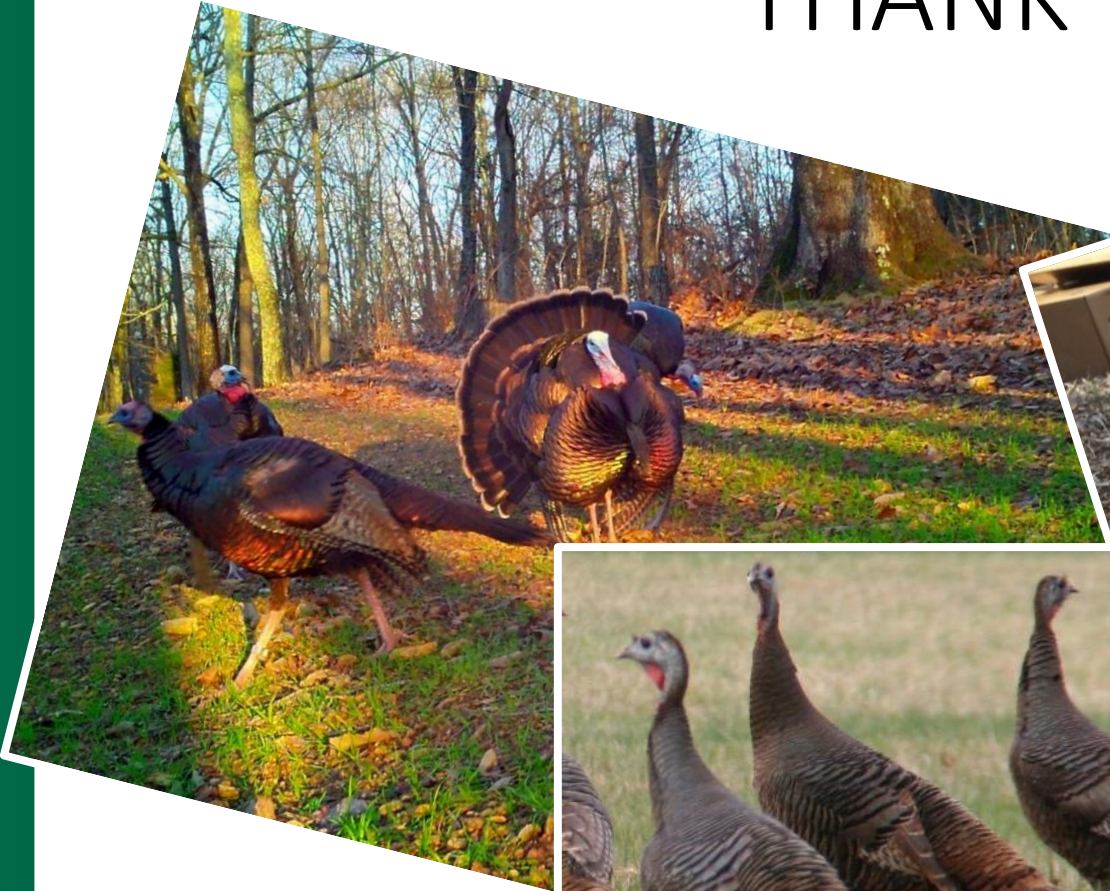


13th National Wild Turkey Symposium

- Dec. 9-11 in Kansas City, MO
- Available on-line as a special issue of Wildlife Society Bulletin
 - Vol. 49, Issue S1



THANK YOU !!!





Questions